

# Tucson, AZ

CLT, CAPI, Mall Intercept, Pre-Recruits  
Focus Facility, On-Site



## Park Place Mall

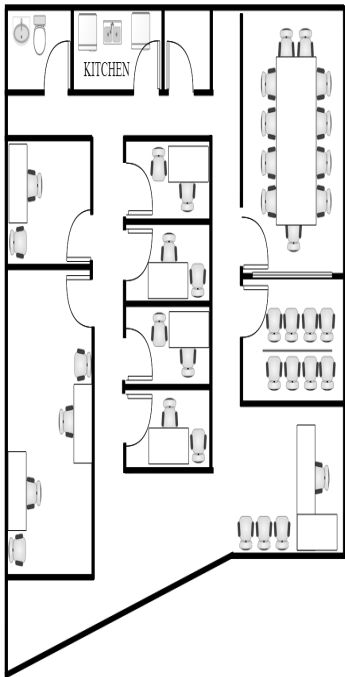
5870 E. Broadway Blvd Space 312  
Tucson, AZ 85711

Phone: 520-514-0424

Fax: 520-514-0334

tucson@opinionsltd.com

Manager: Ryan Dulaney



### Facility Layout:

Size (in square feet)	1,930
Enclosed Interviewing Rooms	8
Interviewing Stations	10
Focus Room Seating	8
Client Viewing Seating	12
Gondola Shelving	16 ft

### Kitchen Equipment

Refrigerators	1
Microwaves	3
Freezers	1
Oven	n/a



### Hispanic Demographics

Puerto Rican	10%
Mexican	80%
South America	5%
Central America	5%
Caribbean	<1%
Fully acculturated	35%
Bi acculturated	25%
Unacculturated	40%

### Anchor Stores:

Macy's Sears  
Dillards

**Trade Area population:** 586,860

### Population by age:

18-24	14%
25-34	19%
35-44	18%
45-54	17%
55-64	15%
65+	17%

### Population by Race:

Cauc.	67%
Black/AA	5%
Hispanic	15%
Asian	2%
Other	11%

### Household income Distribution:

Under \$15K	16%
\$15-25K	14%
\$25-35K	14%
\$35-50k	18%
\$50-75k	18%
\$75-100K	9%
\$100K+	11%

### Hotel Recommendations

Hampton Inn & Suites: 520-514-0500

Residence Inn: 520-790-6100

### Area Restaurants

Applebee's, Texas Roadhouse,  
BJ's Restaurant and Brewhouse

### Directions: (from Tucson Airport TUS) 11 miles/19 minutes

Head northeast on S Tucson Blvd toward I-10. Turn right onto E Valencia Rd. Drive for 1.5 miles and turn left on S Alvernon Way. After 3.1 miles stay straight to go onto S Golf links Rd. After approximately 2 miles, turn left onto South Swan Rd. and drive 1.8 miles until you reach E Broadway Blvd. Mall will be on your right side. Office is located near Dillard's in the main mall area.

**\*\*Bilingual Staff Available\*\***