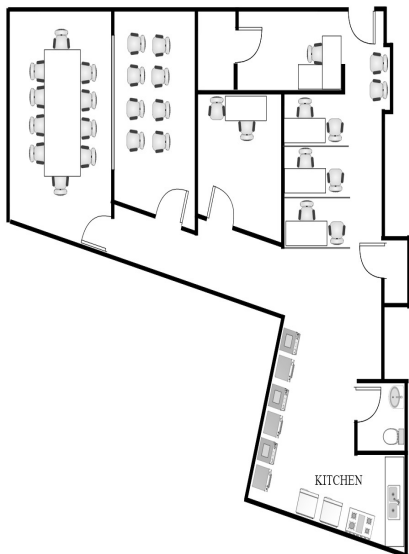


Tampa, FL

CLT, CAPI, Mall Intercept, Pre-Recruits
Focus Facility, On-Site

Brandon Town Center

**459 Brandon Town Center Suite 634
Brandon, FL 33511**
Phone: 813-653-3979
Fax: 813-653-3976
tampa@opinionsltd.com
Manager: Sharon Brandy



<u>Facility Layout:</u>		<u>Kitchen Equipment</u>	
Size (in square feet)	1,354	Refrigerators	1
Enclosed Interviewing Rooms	3	Microwaves	2
Interviewing Stations	8	Freezers	1
Focus Room Seating	9	Oven	2
Client Viewing Seating	5	<u>Additional Equipment</u>	
Gondola Shelving	12 ft.	Washer	4
		Dryer	4



<u>Hispanic Demographics</u>	
Puerto Rican	40%
Mexican	5%
South America	10%
Central America	5%
Caribbean	40%
Fully acculturated	30%
Bi acculturated	40%
Unacculturated	30%

Anchor Stores:	
Macy's	Dillard's JC Penney Sears Dick's Sporting Goods
Trade Area population: 553,158	
Population by age:	
18-24	17%
25-34	19%
35-44	17%
45-54	18%
55-64	15%
65+	14%
Population by Race:	
Cauc.	53%
Black/AA	16%
Hispanic	26%
Asian	4%
Other	1%
Household income Distribution:	
Under \$15K	7%
\$15-25K	8%
\$25-35K	18%
\$35-50k	18%
\$50-75k	20%
\$75-100K	12%
\$100K+	17%

Hotel Recommendations
 Holiday Inn Express: 813-643-3800
 Homestead Studio Suites: 813-643-5900

Area Restaurants
 Cheesecake Factory, Red Lobster,
 Della's After Dark

Directions: (from Tampa Airport TPA) **20 miles/33 minutes**
 Start out on George J Bean Pky toward Bessie Coleman Blvd. Merge onto Memorial Highway toward I-275 N. Drive for 5 miles and merge onto I-4 E. Drive approximately 2.5 miles. Exit on Columbus Dr. and immediately Turn Right on N 50th St. After one mile Turn Left onto ST-60 E. Drive for 5 miles. Turn Right onto Brandon Town Center Blvd. Office is by Macy's in the main mall area.

****Bilingual Staff Available****