

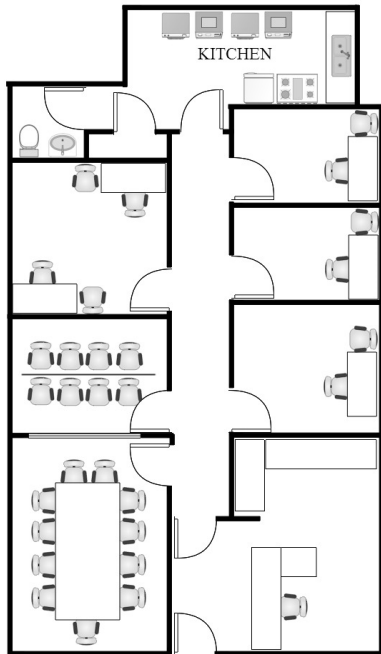
# Sacramento, CA

CLT, CAPI, Mall Intercept, Pre-Recruits  
Focus Facility, On-Site



## Roseville Galleria

1151 Galleria Blvd. Suite 277  
Roseville, CA 95678  
Phone: 916-781-2818  
Fax: 916-781-2757  
Sacramento@opinionsltd.com  
Manager: Nancy Cunningham



### Facility Layout:

Size (in square feet)	1,551
Enclosed Interviewing Rooms	6
Interviewing Stations	8
Focus Room Seating	8
Client Viewing Seating	6
Gondola Shelving	12 ft

### Kitchen Equipment

Refrigerators	2
Microwaves	4
Freezers	1
Oven	2



### Hispanic Demographics

Puerto Rican	5%
Mexican	95%
South America	<1%
Central America	<1%
Caribbean	<1%
Fully acculturated	75%
Bi acculturated	20%
Unacculturated	5%

### Anchor Stores:

JC Penney Macy's  
Nordstrom Sears

Trade Area population: 712,810

### Population by age:

18-24	10%
25-34	23%
35-44	20%
45-54	17%
55-64	13%
65+	17%

### Population by Race:

Cauc.	76%
Black/AA	2%
Hispanic	14%
Asian	7%
Other	1%

### Household income Distribution:

Under \$15K	5%
\$15-25K	6%
\$25-35K	7%
\$35-50k	8%
\$50-75k	15%
\$75-100K	25%
\$100K+	34%

### Hotel Recommendations

Holiday Inn Express: 916-774-6060  
Hyatt Place: 916-781-6400

### Area Restaurants

Olive Garden, Ruth's Chris Steakhouse,  
Buckhorn Grille

### Directions: (from Sacramento Airport SMF) 27 miles/33 minutes

Merge onto I-5 S. Drive 6 miles and merge onto I-80 E toward Reno. After 20 miles, merge onto CA-65 N. Take the Galleria Blvd/Stanford Ranch Road Exit. Keep left to take the Galleria Blvd ramp. Continue to follow the Galleria Blvd and the mall will be on your left side. Office is on the second level near Macy's in the main mall area.

\*\*Bilingual Staff Available\*\*