

Raleigh, NC

CLT, CAPI, Mall Intercept, Pre-Recruits
Focus Facility, On-Site

Triangle Town Center

5959 Triangle Town Blvd. FL-1001
Raleigh, NC 27616

Phone: 919-792-9588

Fax: 919-792-9589

raleigh-durham@opinionsltd.com

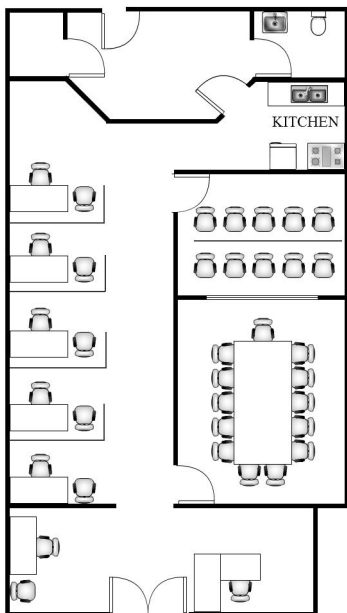
Manager: Jennifer Hall

Facility Layout:

Size (in square feet)	2,208
Enclosed Interviewing Rooms	3
Interviewing Stations	10
Focus Room Seating	12
Client Viewing Seating	10
Gondola Shelving	16 ft.

Kitchen Equipment

Refrigerators	1
Microwaves	2
Freezers	1
Oven	2



Hispanic Demographics

Puerto Rican	20%
Mexican	50%
South America	10%
Central America	10%
Caribbean	10%
Fully acculturated	65%
Bi acculturated	20%
Unacculturated	15%

Anchor Stores:

Macy's Dillard's Saks Fifth Avenue
Sears Belk

Trade Area population: 551,177

Population by age:

18-24	16%
25-34	18%
35-44	21%
45-54	19%
55-64	14%
65+	12%

Population by Race:

Cauc.	57%
Black/AA	25%
Hispanic	14%
Asian	2%
Other	2%

Household income Distribution:

Under \$15K	7%
\$15-25K	8%
\$25-35K	9%
\$35-50k	14%
\$50-75k	21%
\$75-100K	15%
\$100K+	26%

Hotel Recommendations

Courtyard by Marriott: 919-645-0088

Hyatt Place: 919-877-9997

Area Restaurants

Chili's, Crazy Fire Mongolian Grill,
Applebee's

Directions: (from Raleigh-Durham Airport RDU) **10 miles/14 minutes**

Merge onto Aviation Pkwy. Merge onto I-540 E toward US-70. Drive approximately 15 miles. Exit at Triangle Town Blvd. Turn Right onto Triangle Town Blvd. Office is located by Dillard's on the first floor.

****Bilingual Staff Available****