

# Pittsburgh/Erie, PA

CLT, CAPI, Mall Intercept,  
Focus Facility, Pre-Recruits, On-Site



## Millcreek Mall

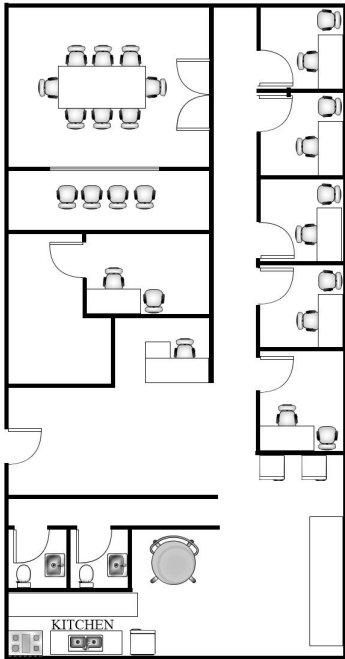
290 Millcreek Mall  
Erie, PA 16565

Phone: 814-868-0873

Fax: 814-864-7012

[pittsburgh-erie@opinionsltd.com](mailto:pittsburgh-erie@opinionsltd.com)

Manager: Tim Tauber



### Facility Layout:

Size (in square feet)	1,375
Enclosed Interviewing Rooms	8
Interviewing Stations	7
Focus Room Seating	8
Client Viewing Seating	4
Gondola Shelving	12 ft

### Kitchen Equipment

Refrigerators	2
Microwaves	3
Freezers	2
Oven	2



### Anchor Stores:

Macy's Sears  
JC Penney Bon-ton

**Trade Area population: 390,582**

### Population by age:

18-24	13%
25-34	19%
35-44	19%
45-54	17%
55-64	14%
65+	18%

### Population by Race:

Cauc.	80%
Black/AA	14%
Hispanic	5%
Asian	1%
Other	<1%

### Household income Distribution:

Under \$15K	23%
\$15-25K	18%
\$25-35K	17%
\$35-50k	16%
\$50-75k	14%
\$75-100K	9%
\$100K+	3%

### Hotel Recommendations

Hilton Garden Inn: 814-866-1390

Fairfield Inn by Marriott: 814-868-0985

### Area Restaurants

Max & Erma's, Outback Steakhouse

Smokey Bones

### Directions: (from Erie International Airport ERI) **8 miles/15 minutes**

Start **NORTHEAST** on W 12th St. toward Western Lane. Merge on to I-79 S. Take Exit 180 toward US-19. Turn left on US-19/Peach St. Turn Left onto Millcreek Mall Dr. Mall is on the left. Office is located across from Macy's on the lower level in the main mall area.