



# Los Angeles, CA

CLT, CAPI, Mall Intercept,  
Focus Facility, Pre-Recruits, On-Site

## MainPlace Mall

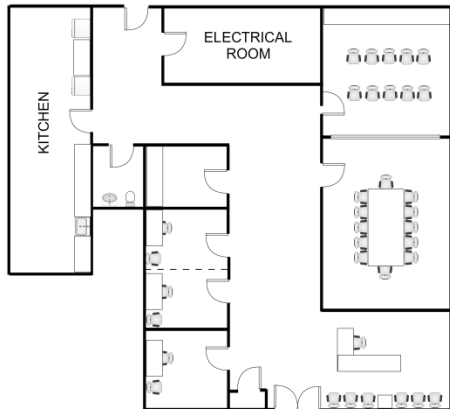
2800 North Main St. Suite 2088  
Santa Ana, CA 92705

Phone: 714-972-4543

Fax: 714-972-4546

LA-OrangeCounty@opinionsltd.com

Manager: Cynthia Randall



<u>Facility Layout:</u>		<u>Kitchen Equipment</u>	
Size (in square feet)	1,687	Refrigerators	1
Enclosed Interviewing Rooms	4	Microwaves	4
Interviewing Stations	6	Freezers	1
Focus Room Seating	12	Oven	n/a
Client Viewing Seating	10		
Gondola Shelving	20 ft		



### Hispanic Demographics

Puerto Rican	9%
Mexican	68%
South America	6%
Central America	15%
Caribbean	2%
Fully acculturated	25%
Bi acculturated	45%
Unacculturated	30%

<u>Anchor Stores:</u>	
JCPenney	Macy's Nordstrom
<b>Trade Area population: 1,264,119</b>	
<u>Population by age:</u>	
18-24	16%
25-34	19%
35-44	17%
45-54	21%
55-64	14%
65+	13%
<u>Population by Race:</u>	
Cauc.	58%
Black/AA	2%
Hispanic	26%
Asian	12%
Other	2%
<u>Household income Distribution:</u>	
Under \$15K	5%
\$15-25K	8%
\$25-35K	13%
\$35-50k	12%
\$50-75k	17%
\$75-100K	14%
\$100K+	31%

### Hotel Recommendations

DoubleTree: 714-634-4500

Marriott: 714-750-8000

### Area Restaurants

Olive Garden, Rubio's, California Pizza Kitchen

### Directions: (from John Wayne Airport SNA) 10miles/16 minutes

Get on State Route 55 N in Irvine. Drive approximately 2.5 miles and take I-5 N to N Broadway in Santa Ana. After approximately 7 miles, take exit 105B and continue on N Broadway to your destination. Mall will be straight ahead. Office is on the second level near JCPenney.

**\*\*Bilingual Staff Available\*\***