



Chicago, IL

CLT, CAPI, Mall Intercept,
Focus Facility, Pre-Recruits, On-Site

Orland Square Mall

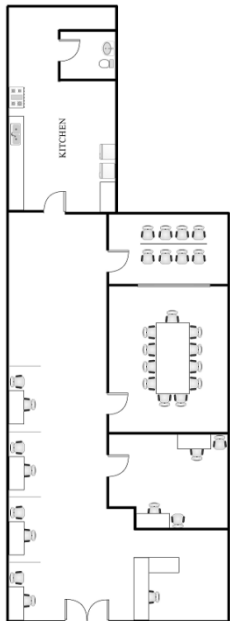
604 Orland Square Space F01E
Orland Park, IL 60462

Phone: 708-645-4760

Fax: 708-645-4780

Chicago-Orland@opinionsltd.com

Manager: Alison Cavner



<u>Facility Layout:</u>		<u>Kitchen Equipment</u>	
Size (in square feet)	1,311	Refrigerators	1
Enclosed Rooms	3	Microwaves	3
Interviewing Stations	6	Freezers	1
Focus Room Seating	12	Oven	0
Client Viewing Seating	8		
Gondola Shelving	16 ft		



Hispanic Demographics

Puerto Rican	30%
Mexican	45%
South America	10%
Central America	10%
Caribbean	5%
Fully acculturated	20%
Bi acculturated	40%
Unacculturated	40%

Anchor Stores:	
JC Penney	Macy's
Sears	Carson Pirie Scott
Trade Area population: 730,981	
Population by age:	
18-24	16%
25-34	15%
35-44	16%
45-54	19%
55-64	16%
65+	18%
Population by Race:	
Cauc.	79%
Black/AA	6%
Hispanic	10%
Asian	4%
Other	<1%
Household income Distribution:	
Under \$15K	7%
\$15-25K	7%
\$25-35K	7%
\$35-50k	11%
\$50-75k	21%
\$75-100K	16%
\$100K+	31%

Hotel Recommendations

Homewood Suites: 708-364-9411

County Inn & Suites: 708-560-9300

Area Restaurants

Buca di Beppo, The Cheesecake Factory
Red Lobster

Directions: (from Chicago Midway Airport MDW) 17 miles/33 minutes

Start going south on S Cicero. Take a right on W 63rd St and drive for approximately 4 miles. Turn left on S Archer Rd/IL-171 and drive 3 miles and then merge onto US45 S. Drive approximately 8.5 miles. Turn left onto W 147th St and then right on John Humphrey Dr. Mall is on your right side. Office is located near JC Penney in main mall area on the upper level.

****Bilingual Staff Available****