

# New York City, NY

CLT, CAPI, Mall Intercept, Pre-Recruits  
Client Viewing, On-Site



## Willowbrook Mall

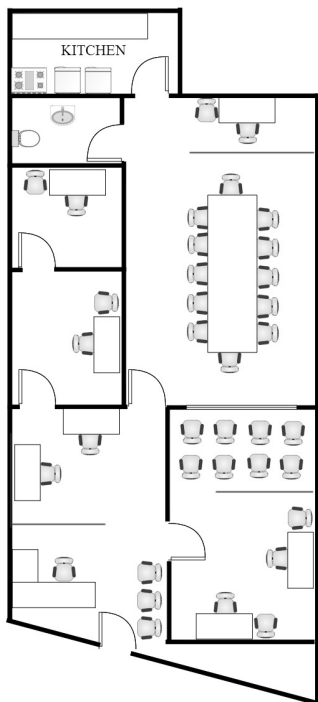
1400 Willowbrook Mall Space 1440  
Wayne, NJ 07470

Phone: 973-785-0770

Fax: 973-785-0771

NYC-NJ@opinionsltd.com

Manager: Cindy Conklin



### Facility Layout:

Size (in square feet)	1,131
Enclosed Interviewing Rooms	4
Interviewing Stations	10
Focus Room Seating	12
Client Viewing Seating	4
Gondola Shelving	12 ft

### Kitchen Equipment

Refrigerators	1
Microwaves	2
Freezers	1
Oven	1



### Hispanic Demographics

Puerto Rican	45%
Mexican	15%
South America	10%
Central America	10%
Caribbean	20%
Fully acculturated	30%
Bi acculturated	50%
Unacculturated	20%

### Anchor Stores

Sears Macy's  
Lord & Taylor Bloomingdales

Trade Area population: 800,167

### Population by age:

18-24	14%
25-34	17%
35-44	16%
45-54	19%
55-64	18%
65+	16%

### Population by Race:

Cauc.	62%
Black/AA	12%
Hispanic	22%
Asian	4%
Other	<1%

### Household income Distribution:

Under \$15K	7%
\$15-25K	10%
\$25-35K	9%
\$35-50k	11%
\$50-75k	15%
\$75-100K	18%
\$100K+	30%

### Hotel Recommendations

Crowne Plaza: 973-227-9200

Holiday Inn: 973-785-9000

### Area Restaurants

202 Italian Bistro, Bahama Breeze

The Cheesecake Factory

### Directions: (from LaGuardia Airport LGA) 22 miles/37 minutes

Start out going North on US-1. Merge onto RT-21 N toward Newark. Drive approximately 10 miles and then merge onto RT-3 W toward Clifton. Drive for 5 miles. Take a slight right onto US-46 W for 5 miles. Turn left onto Willowbrook Mall. Mall will be on your left. Office is on the lower level near California Pizza Kitchen in the main mall area.

\*\*Bilingual Staff Available\*\*