

# Los Angeles, CA

CLT, CAPI, Mall Intercept, Pre-Recruits  
Focus Facility, On-Site



## Topanga Mall

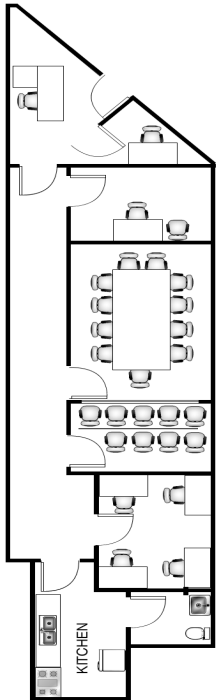
6660 Topanga Canyon Blvd 49a  
Canoga Park, CA 91303

Phone: 818-884-8623

Fax: 818-884-8626

losangeles@opinionsltd.com

Manager: Nicole Galan



### Facility Layout:

Size (in square feet)	1,480
Enclosed Interviewing Rooms	5
Interviewing Stations	8
Focus Room Seating	12
Client Viewing Seating	10
Gondola Shelving	20 ft

### Kitchen Equipment

Refrigerators	1
Microwaves	4
Freezers	1
Oven	2



### Hispanic Demographics

Puerto Rican	8%
Mexican	70%
South America	5%
Central America	15%
Caribbean	2%
Fully acculturated	25%
Bi acculturated	45%
Unacculturated	30%

### Anchor Stores:

Nordstrom Macy's Neiman Marcus  
Sears Target

**Trade Area population:** 1,105,347

### Population by age:

18-24	17%
25-34	16%
35-44	18%
45-54	19%
55-64	15%
65+	15%

### Population by Race:

Cauc.	57%
Black/AA	4%
Hispanic	27%
Asian	10%
Other	2%

### Household income Distribution:

Under \$15K	6%
\$15-25K	8%
\$25-35K	12%
\$35-50k	12%
\$50-75k	17%
\$75-100K	13%
\$100K+	32%

### Hotel Recommendations

Marriott: 818-887-4800

Hilton Inn: 818-595-1000

### Area Restaurants

California Pizza Kitchen, PF Chang's,  
Red Robin

### Directions: (from Los Angeles Airport LAX) **28 miles/34 minutes**

Merge onto I-405 N. Drive approximately 15 miles and merge onto US-101 N. After 9 miles take the Topanga Canyon Blvd. exit and turn right onto Topanga Canyon Blvd. Mall will be on the right. Office is on the first level between near Macy's in the main mall area.

\*\*Bilingual Staff Available\*\*