

Indianapolis, IN

CLT, CAPI, Mall Intercept, Pre-Recruits
Focus Facility, On-Site

Castleton Square Mall

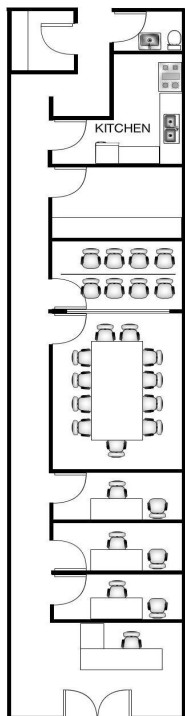
6020 82nd St. Suite 304
Indianapolis, IN 46250

Phone: 317-579-9999

Fax: 317-579-9790

indianapolis@opinionsltd.com

Manager: Brian Hargrove



Facility Layout:

Size (in square feet)	2,186
Enclosed Interviewing Rooms	6
Interviewing Stations	8
Focus Room Seating	12
Client Viewing Seating	8
Gondola Shelving	20 ft

Kitchen Equipment

Refrigerators	1
Microwaves	4
Freezers	1
Oven	2



Anchor Stores:

Macy's Dick's Sporting Goods
Von Maur Sears JC Penney

Trade Area population: 807,576

Population by age:

18-24	18%
25-34	26%
35-44	23%
45-54	14%
55-64	9%
65+	10%

Population by Race:

Cauc.	75%
Black/AA	21%
Hispanic	2%
Asian	2%
Other	<1%

Household income Distribution:

Under \$15K	3%
\$15-25K	3%
\$25-35K	20%
\$35-50k	24%
\$50-75k	22%
\$75-100K	14%
\$100K+	14%

Hotel Recommendations

Courtyard by Marriott: 317-576-9599

Embassy Suites: 317-872-7700

Area Restaurants

T.G.I. Friday's, The Melting Pot,
Longhorn Steakhouse

Directions: (from Indianapolis Airport IND) **38 miles/46 minutes**

Start out going WEST on I-70 W. Take IN-267 S exit toward Mooresville. Merge onto I-70 E. Merge onto I-465 S/I-74 E. Drive approximately 29 miles. Merge onto I-69 N/IN-37 N toward Ft. Wayne. Exit at 82nd Street. Mall will be on your right. Office is located by Sears in the main mall area.