

# Chicago, IL

CLT, CAPI, Mall Intercept, Pre-Recruits  
Client Viewing, On-Site

## Harlem Irving Plaza

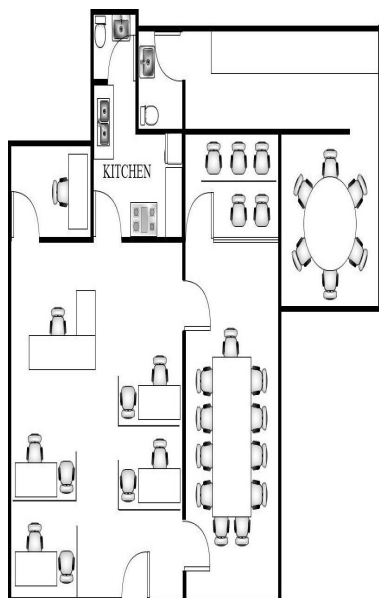
4192 N. Harlem Ave. Suite 67  
Norridge, IL 60706

Phone: 708-452-4504

Fax: 708-452-4542

chicago@opinionsltd.com

Manager: Haidy Foster



<u>Facility Layout:</u>		<u>Kitchen Equipment</u>	
Size (in square feet)	1,420	Refrigerators	1
Enclosed Rooms	5	Microwaves	3
Interviewing Stations	6	Freezers	1
Focus Room Seating	n/a	Oven	1
Client Viewing Seating	3		
Gondola Shelving	16 ft		



### Hispanic Demographics

Puerto Rican	30%
Mexican	45%
South America	10%
Central America	10%
Caribbean	5%
Fully acculturated	20%
Bi acculturated	40%
Unacculturated	40%

### Anchor Stores:

Target Kohl's Best Buy  
Carson Pirie Scott

**Trade Area population:** 731,942

### Population by age:

18-24	16%
25-34	18%
35-44	19%
45-54	19%
55-64	12%
65+	16%

### Population by Race:

Cauc.	42%
Black/AA	11%
Hispanic	35%
Asian	10%
Other	2%

### Household income Distribution:

Under \$15K	12%
\$15-25K	10%
\$25-35K	11%
\$35-50k	17%
\$50-75k	21%
\$75-100K	13%
\$100K+	16%

### Hotel Recommendations

Holiday Inn: 847-954-8600

Spring Hills Suites: 773-867-0000

### Area Restaurants

Vince's Italian, Gibson's Steakhouse,  
Sizzler

### Directions: (from Chicago O'Hare Airport ORD) 8 miles/17 minutes

Merge onto I-190 E. Exit toward IL-43/Harlem Ave. Turn Right onto N. Harlem Ave/IL-43. Mall is on your right side. Office is located near Carson's in main mall area beside Rogers & Holland Jewelers.

**\*\*Bilingual Staff Available\*\***