

Chicago, IL

CLT, CAPI, Mall Intercept, Pre-Recruits
Client Viewing, On-Site

Gurnee Mills Mall

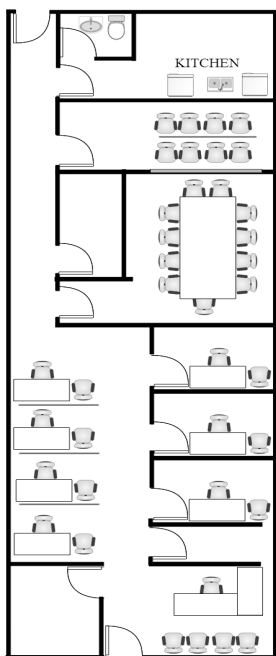
6170 W. Grand Ave. Suite 191
Gurnee, IL 60031

Phone: 847-855-2751

Fax: 847-855-2759

chicago-gur@opinionsltd.com

Manager: Sammy Juarez



<u>Facility Layout:</u>		<u>Kitchen Equipment</u>	
Size (in square feet)	1,638	Refrigerators	1
Enclosed Interviewing Rooms	7	Microwaves	4
Interviewing Stations	12	Freezers	1
Focus Room Seating	8	Oven	n/a
Client Viewing Seating	6		
Gondola Shelving	16 ft		



Hispanic Demographics

Puerto Rican	20%
Mexican	60%
South America	5%
Central America	5%
Caribbean	10%
Fully acculturated	35%
Bi acculturated	45%
Unacculturated	20%

Anchor Stores:
Sear's Macy's Kohl's
Burlington Coat Factory Sak's Fifth Ave

Trade Area population: 1,419,128

Population by age:

18-24	21%
25-34	18%
35-44	23%
45-54	17%
55-64	12%
65+	9%

Population by Race:

Cauc.	46%
Black/AA	13%
Hispanic	29%
Asian	11%
Other	1%

Household income Distribution:

Under \$15K	8%
\$15-25K	10%
\$25-35K	11%
\$35-50k	18%
\$50-75k	23%
\$75-100K	16%
\$100K+	14%

****Bilingual Staff Available****

Hotel Recommendations

Holiday Inn: 847-336-6300

Fairfield Inn: 847-855-8868

Area Restaurants

Rainforest Café, Red Lobster,

Tina's Italian Bake Shop

Directions: (from Chicago O'Hare Airport ORD) **33 miles/43 minutes**

Merge onto I-190 E. Merge onto I-294 N toward Milwaukee. After approximately 14 miles I-294 N becomes I-94 W. After 16 miles, merge onto IL-132 W/ Grand Ave. Mall is on your right side. Office is located near Burlington Coat Factory in the main mall area.